

For Additional Information Please Contact:
 COSL DRILLING
 Marketing Department
 P. O. Box 232, Beijing 101149, China, P.R.C
 Phone: +86 010 84522511
 Fax: +86 010 84522867
 sh_cosl_drillingmarket@cosl.com.cn
 www.cosl.com.cn

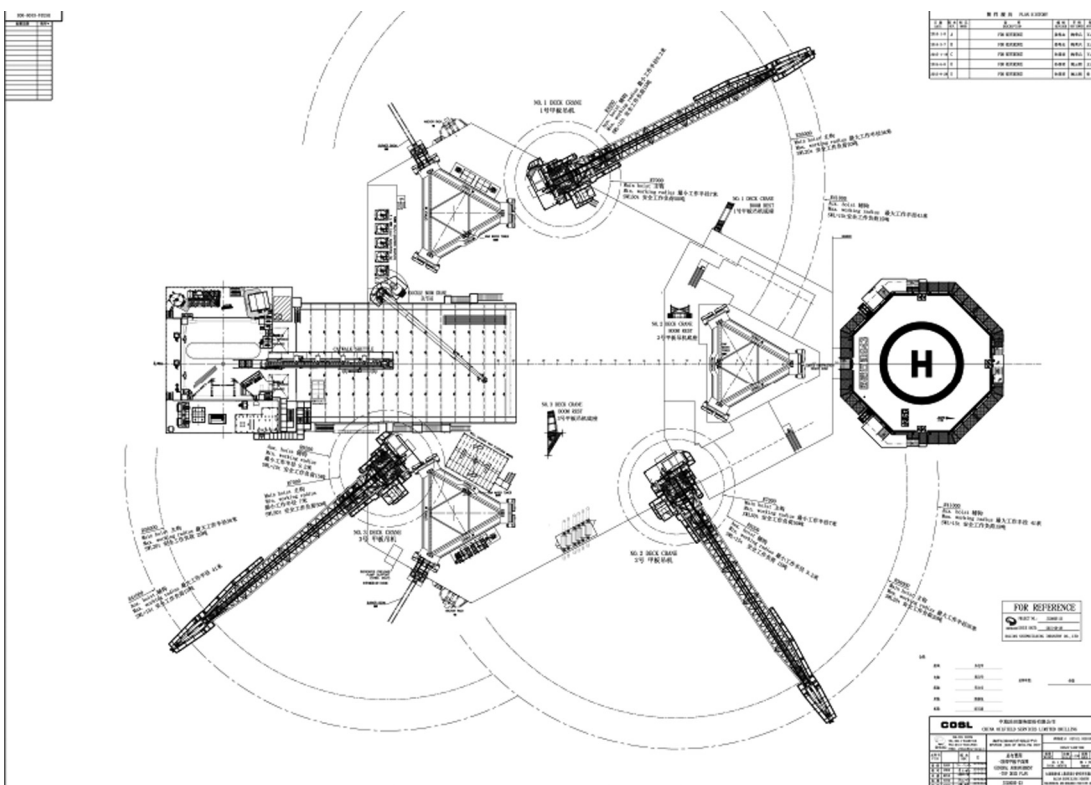
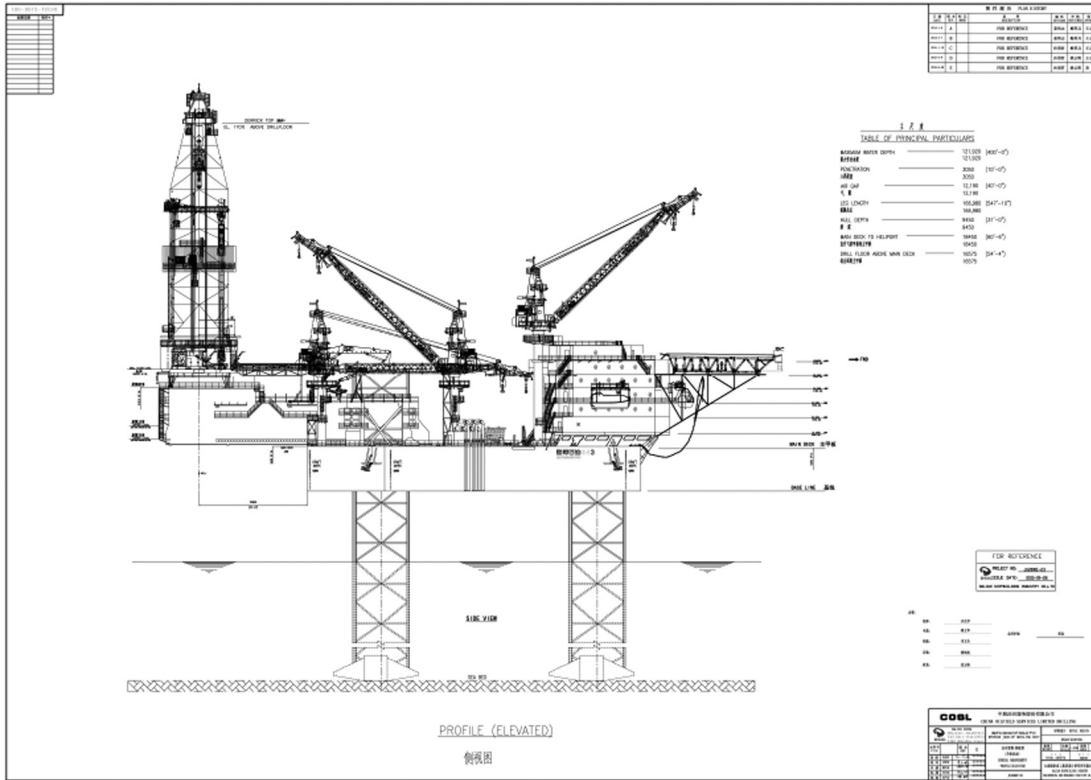


Revision Date: July 30th, 2015

HAIYANGSHIYOU 943 (HYSY943)

General Description	
Design	Friede&Goldman JU-2000E
Constructing Shipyard	Dalian Shipbuilding Industry Offshore Co. Ltd
Year Enter Service/Significant Upgrades	2015
Classification	ABS & CCS
Flag	China
Displacement	17987
Variable Deck	6,486 M.Tons
(Min/Max)Operating Water Depth	30ft/400 ft
Maximum Drilling Depth	35,000 ft
Accommodation	150
Drilling Equipment	
Top Drive	NOV/TDS-1000A / 1,000st
Draw works	NOV/SSGD-1000-6000-48-82
Derrick	NOV/D-170×40×40×18×18-2100—BN/953MT
Drilling envelope	75ftx 30ft
Mud Pumps	3 x NOV/ 14-P-220/2,200HP/7,500psi
Main power	6 x Caterpillar 3516C-HD/1603kw
Storage Capacities	
Fuel Oil	3,365bbbls
Liquid Mud	4,252bbbls
Drill Water	6,904bbbls
Portable Water	2,852bbbls
BOP & Subsea Equipment	
BOP Rams	1 xCameron TL 18-3/4" 15k share ram 2 xCameron TL 18-3/4" 15K pipe ram 1 xCameron TL 18-3/4" variable ram
BOP Annular	1 xCameron DL 18-3/4" 10K Annular
Diverter	1 x GE OIL&GAS/ KFDJ-500
Other Information	
Cranes	3 x LIEBHERR / MTC 2600-50 EX LITRONIC / 50ton
Heli-deck	Sikorsky S-61N and S-92A
Containment System	zero discharge

HAIYANGSHIYOU 943 (HYSY943)



For Additional Information Please Contact:
 COSL DRILLING
 Marketing Department
 P. O. Box 232, Beijing 101149, China, P.R.C
 Phone: +86 010 84522511
 Fax: +86 010 84522867
 sh_cosl_drillingmarket@cosl.com.cn
 www.cosl.com.cn



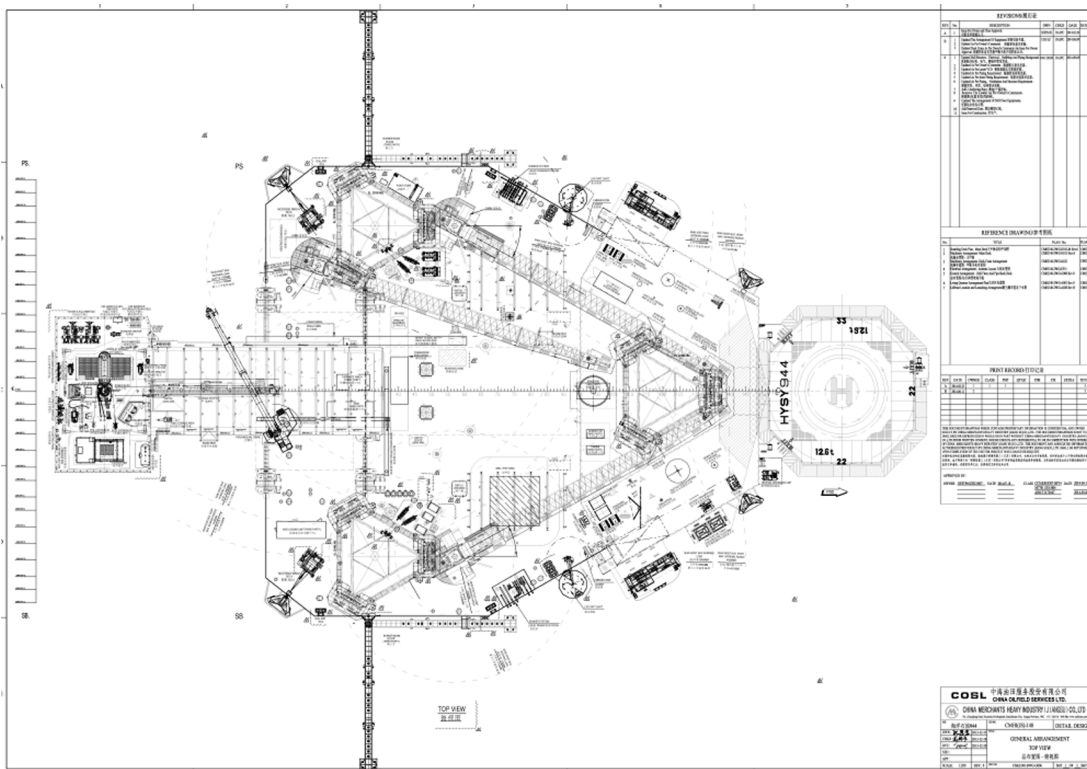
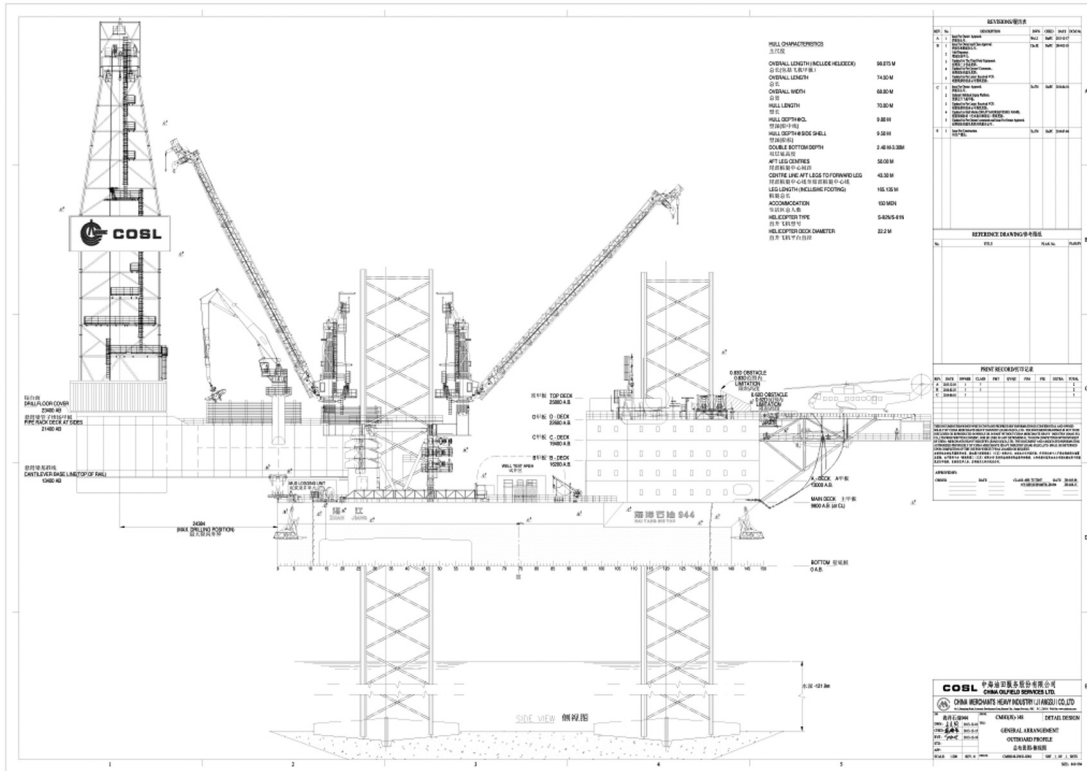
Revision Date: July 30th, 2015

HAIYANGSHIYOU 944 (HYSY944)

General Description	
Design	Gusto MSC B.V
Constructing Shipyard	CHINA MERCHANTS HEAVY INDUSTRY(JIANGSU) CO.,LTD.
Year Enter Service/Significant Upgrades	2016/
Classification	ABS / CCS
Flag	China
Displacement	24,875tons
Variable Deck	6500tons
(Min/Max)Operating Water Depth	50ft/400ft
Maximum Drilling Depth	30,000ft
Accommodation	150
Drilling Equipment	
Top Drive	Varco TDS-8SA / 750st /1,150hp/7500psi
Draw works	NOVSSGD-750 / 4x1150hp
Derrick	NOV D-170X40X40X18X1500
Drilling envelope	80ftx 50ft
Mud Pumps	3 x NOV / 14-P-220/ 7,500psi
Main power	5 x Caterpillar3516CHD/1603KW Diesel Engines, 5 x CaterpillarSR4B,1530KWAC Generators
Storage Capacities	
Fuel Oil	4,717bbbls
Liquid Mud	5,195bbbls
Drill Water	1,9266bbbls
Portable Water	2,714bbbls
BOP & Subsea Equipment	
BOP Rams	2X Cameron 18-3/4" 15K Double Ram
BOP Annular	1 X Cameron 18-3/4" 10K Annular
Diverter	1 X DRIL-QUIP 49.5" Fixed Diverter System
Other Information	
Cranes	3xLIEBHERR / S7226 / 52ton
Heli-deck	Sikorsky 92&S61N
Containment System	zero discharge

HAIYANGSHIYOU 944 (HYSY944)

Jack Ups



These specifications are intended for general reference purposes only. All equipment shall be operated and maintained at all times, in compliance with COSL DRILLING standard operating manuals, policies and procedures, and within its stated operational limits or continuous rated capacity, in order to assure maximum operational efficiency.